

NGAROTO

193m²
 2
 2
 3
 2

A contemporary pavilion-style house design that offers both spacious areas for a busy family to gather and retreat spaces for individual needs. The home features three double bedrooms, open plan family and dining and a modern style kitchen with scullery.



HOME FEATURES

- Three bedrooms with ensuite and walk-in wardrobe in master bedroom
- Open plan family and dining
- Modern style kitchen with scullery
- Separate living room
- Double garage with internal access and laundry

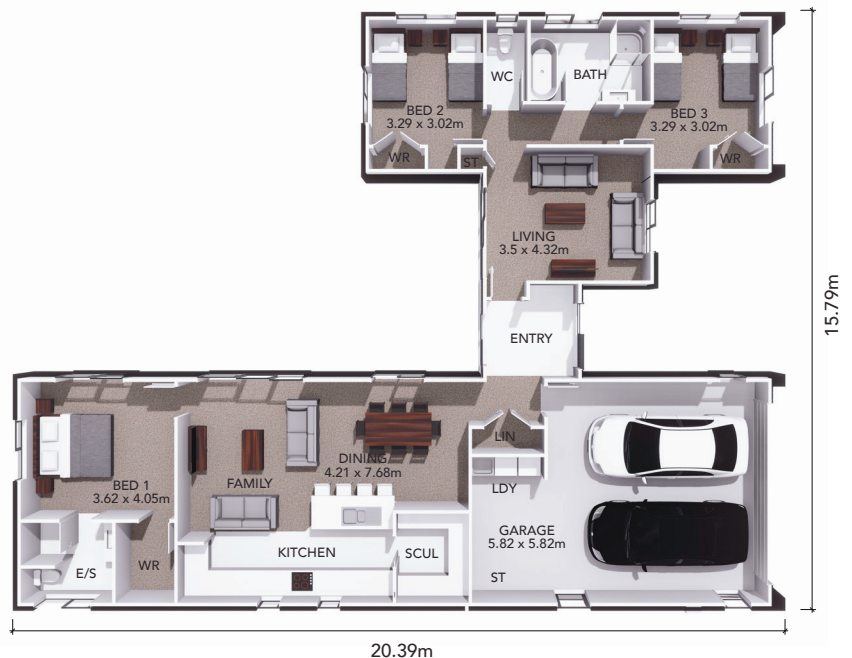
HOME DIMENSIONS

Length: 20.39m

Width: 15.79m

Area over brick: 193.8mm²

Area over framing: 183.2mm²



The overall size of the home (m²) is indicative only as the exterior cladding detail selected may alter the final dimensions.