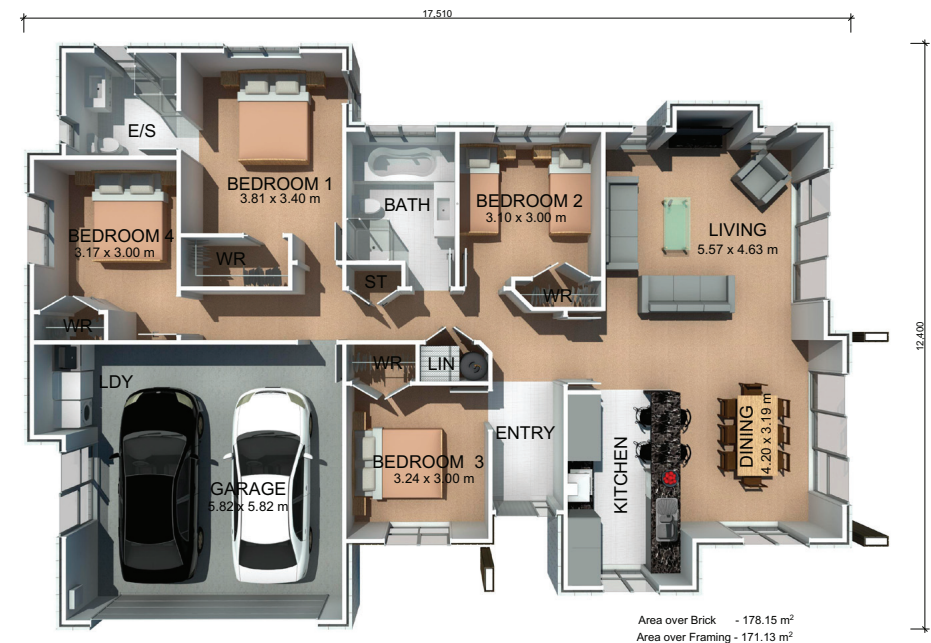


FLAXMILL

178m²
 4
 2
 2
 1



A well-designed four bedroom home, the Flaxmill delights with open-plan kitchen, living and dining.

HOME FEATURES

- Four bedrooms with ensuite and walk-in wardrobe to master bedroom
- Open-plan kitchen, living and dining
- Double garage with laundry
- 10 year Residential Builders Guarantee

HOME DIMENSIONS

Length: 17.5m

Width: 12.4m

Area over brick: 178.15m²

Area over framing: 171.13m²