

# RUAPEHU

 189m<sup>2</sup>
 2
  2
  3
  2

Introducing our sophisticated and innovative design and build house plan. With its seamless integration of sleek modern aesthetics and timeless charm of traditional designs, this plan offers the perfect balance of contemporary elegance and classic allure. From the open-concept layouts to the thoughtfully curated finishes, every detail has been meticulously crafted to create a truly exceptional living space. Whether you're a fan of sleek lines and minimalist decor or appreciate the warmth and character of traditional architecture, this house plan encompasses it all.



## HOME FEATURES

- Three double bedrooms
- Master bedrooms with walk-in wardrobe and ensuite
- Galley-style kitchen with scullery
- Open plan dining and living
- Separate media room
- Double garage with laundry
- Fixed price contract
- 10 year residential build guarantee

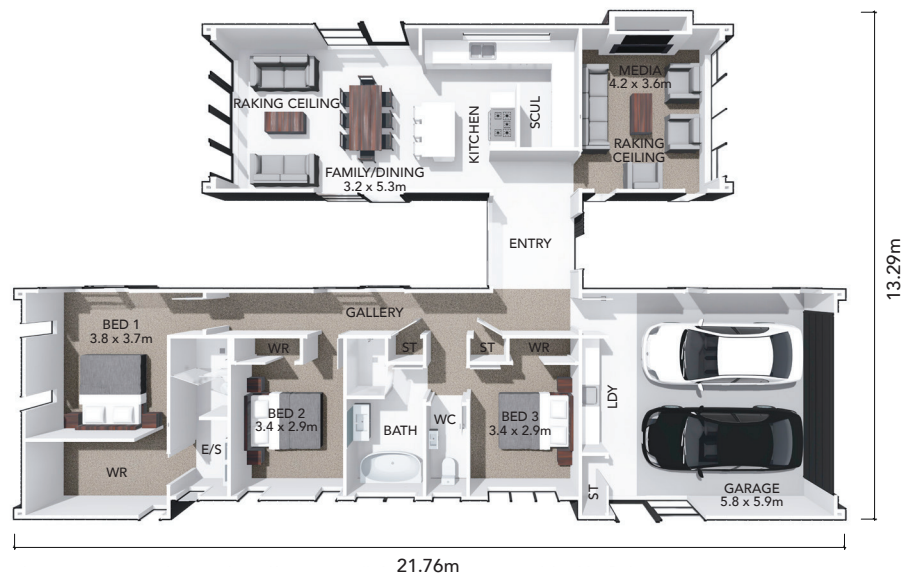
## HOME DIMENSIONS

**Length:** 21.76m

**Width:** 13.29m

**Area over cladding:** 189.20m<sup>2</sup>

**Area over framing:** 189.20m<sup>2</sup>



*The overall size of the home (m2) is indicative only as the exterior cladding detail selected may alter the final dimensions.*